



8755 W. Higgins Road  
Suite 500  
Chicago, Illinois USA 60631

Dec 3rd, 2018

To whom it may concern:

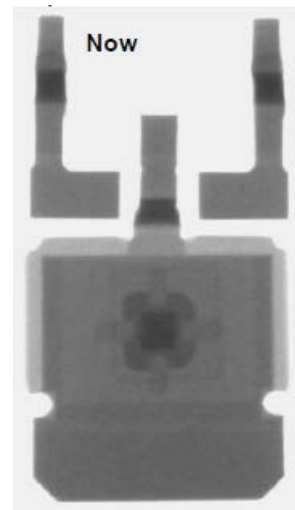
This is to notify that Littelfuse will optimize the lead frame inner dimension for On portfolio Dpak part numbers. The detail part list refers to attached page 2.

There will be no change on product fit, form, and function. The lead frame dimension optimization is implemented to improve the process capability and can be only observed via X-Ray. Below is the sample X-Ray image difference between original and new lead frame.

Original Lead Frame X-Ray Image:



New Lead Frame X-Ray Image:



**Product Form, fit, function changes:** None

**Product Part number changes:** None

**Change Effective date:** Dec 4th, 2018

**Replacement products:** N/A

**Last time buy:** N/A

If you have any questions or concerns, please contact our local Sales team.

Zhiwei Wang  
Global Product Manager of Power Thyristor Discrete  
Semiconductor Business Unit, Wuxi, China  
+86 510 85277701 - 7927  
[zwang@littelfuse.com](mailto:zwang@littelfuse.com)

[Affected Part number List:](#)

MAC4DCM-1G
MAC4DCMT4G
MAC4DCN-1G
MAC4DCNT4G
MAC4DHM-1G
MAC4DHMT4G
MAC4DLM-1G
MAC4DLMT4G
MAC4DSM-1G
MAC4DSMT4G
MAC4DSN-1G
MAC4DSNT4G
MCR12DCMT4G
MCR12DCNT4G
MCR12DSMT4G
MCR12DSMT4H
MCR12DSN-1G
MCR12DSNT4G
MCR8DCMT4G
MCR8DCNT4G
MCR8DSMT4G
MCR8DSNT4G
SCR12DCMT4G